

场景图



**Anypos
500**

**Anypos
500**

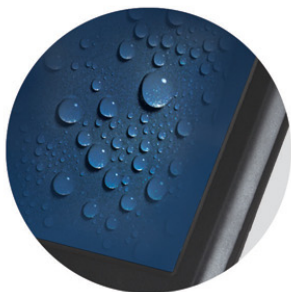
Anypos500 is an all-in-one terminal based on Windows OS offering industry-leading 5 wire resistive touch screen, aluminum housing fanless design and industrial motherboard. The waterproof display avoids damage by liquids and soil in harsh environment, making it ideal for hospitality and retail; 2nd touch optional screen is available as customer display which can be used to engage shoppers with multimedia at the checkout counter; Colors optional panel makes your solution unique among the market.



Anypos 500

Features

- Upper cable management design to keep simple cabling
- Aluminum housing for stable standing and better heat elimination
- Streamline design with artistic outlook
- Various Windows-based CPU supporting all common-used OS
- Waterproof structure design against liquid spill
- Removable hard disk for easy maintenances



Specification

Code	5361A	5381A	5391A	5531A
CPU	ATOM D525 Dual Core, 1.8GHz	Celeron 1037U Dual Core, 1.8GHz 22nm	i3 3227U Dual Core, 1.9GHz 22nm	Intel Baytrail Dual Core 2.41GHz
Memory	2GB DDRIII, up to 4GB			
Ethernet	1*10/100/1000M			
Hard Disk	500GB Hard Disk, 32GB SATA SSD optional			
LCD	15" TFT 1024*768			
Touch?Screen	5 wires resistive	5 wires resistive, true flat	5 wires resistive	
Horizontal	± 80°			
Vertical	± 80°			
Temperature	-10° C to45° C			
Power	DC 12V/ 5A			
Interfaces	4*USB, 1*USB/12V, 4*RS232, 1*LPT,1*KB/MS, 1*VGA, 1*RJ45,1*Drawer, 2*Audio Jack, 1*12V Out	7*USB, 4*RS232, 1*LPT, 1*KB/MS, 1*VGA,1*RJ45, 2*Drawer, 2*Audio Jack, 1*12V Out		
OS	Windows XP/7/8, POSReady2009, POSReady7, WES7, Linux			Windows 7/8, POSReady7, WES7, Linux
Dimensions	370mm(W)*247mm(D)*325mm(H)			
MSR	3 Tracks			
3G Module	WCDMA or CDMA2000			
Options WiFi	IEEE802.11b/g/n			
Audio Module	2*2W	/		
2nd display	9.7" , 12.1" , 15" TFT?LCD,?touch?screen optional			
Customer display	CD220 2*20 VFD			